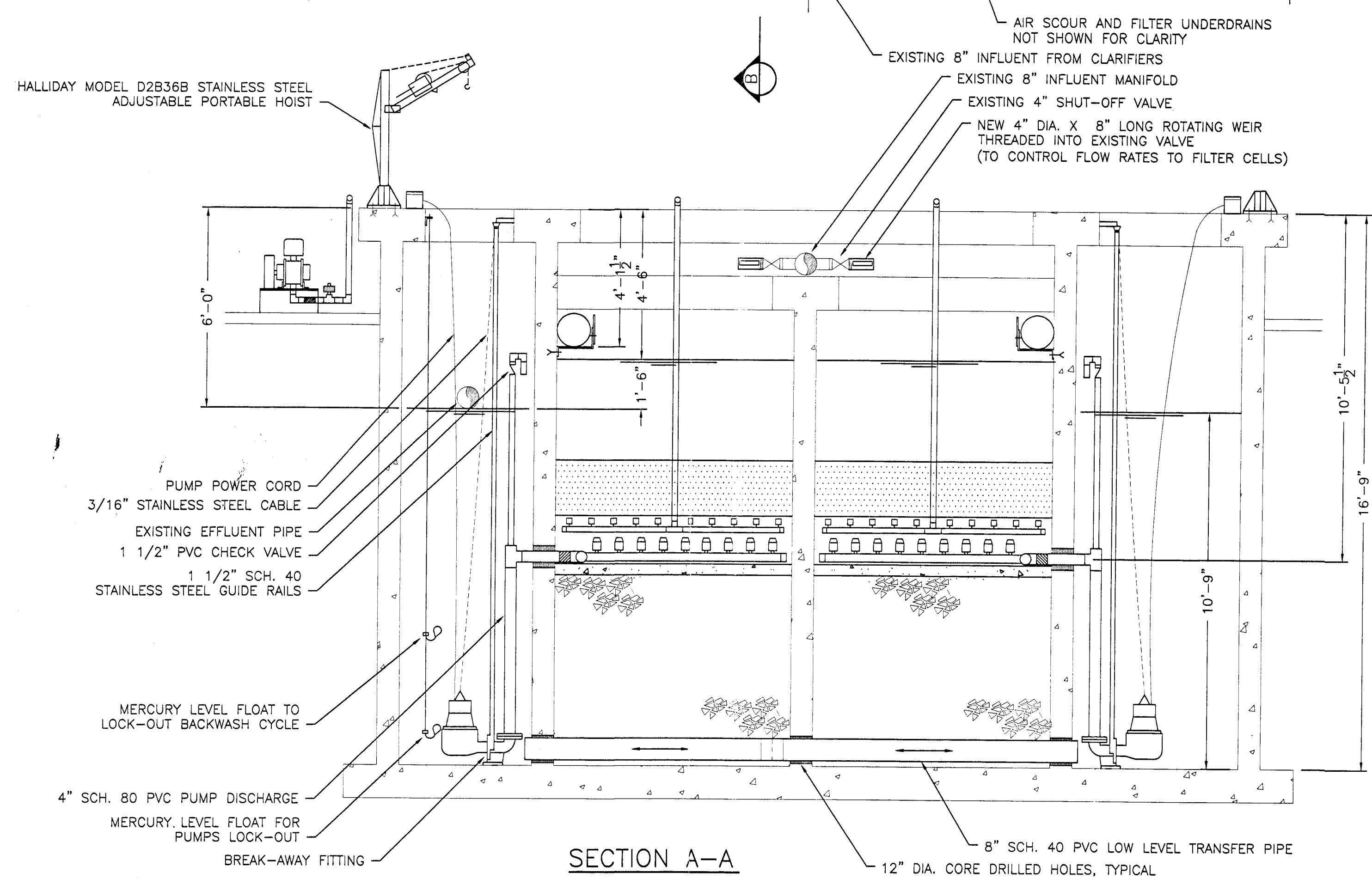
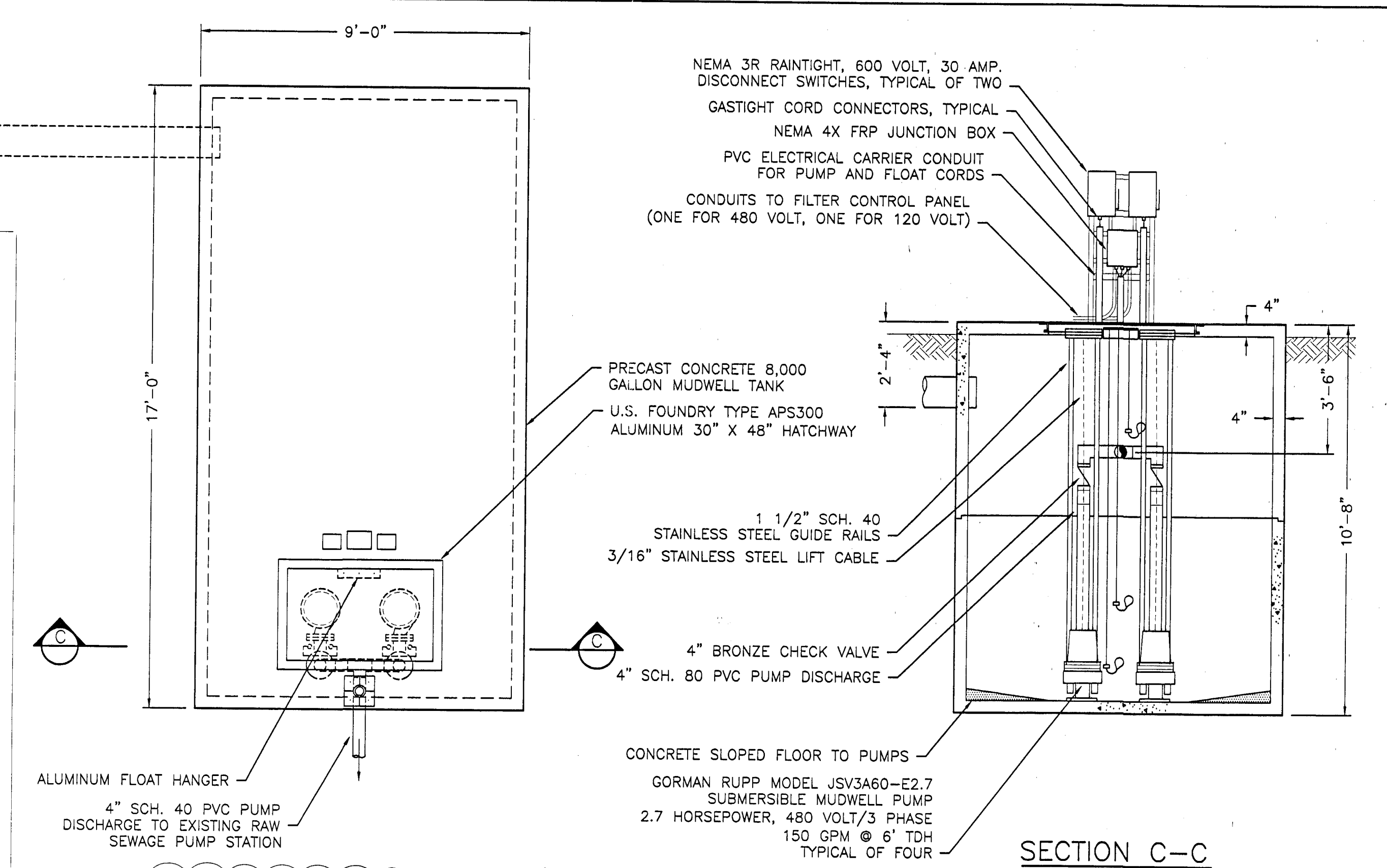


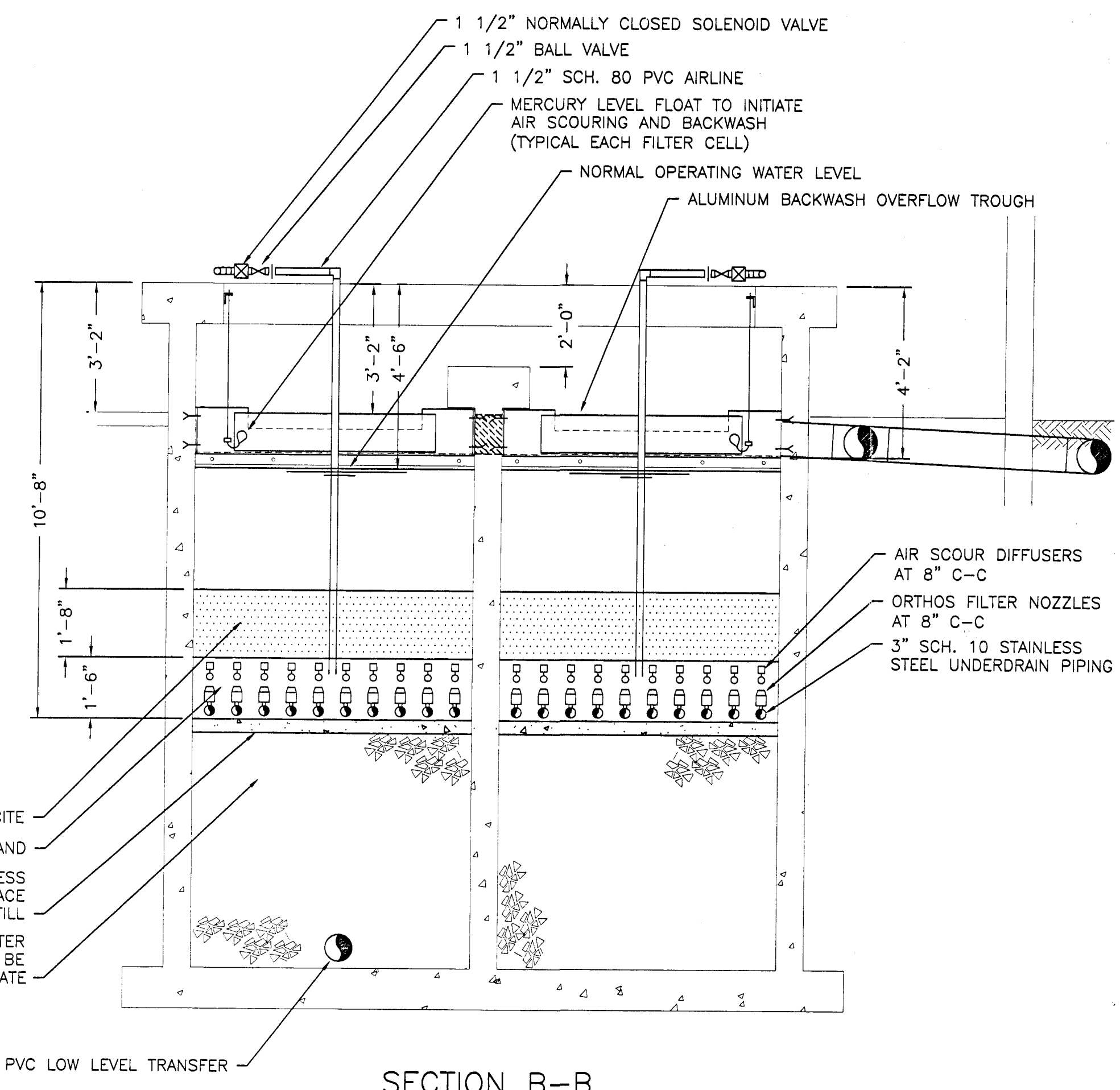
PLAN VIEW



SECTION A-A



SECTION C-C



SECTION B-B

DESIGN CRITERIA
 THE TERTIARY FILTER IS DESIGNED TO THE 1997 EDITION OF THE STANDARDS FOR WASTEWATER FACILITIES (TEN STATES STANDARDS) AND THE DELAWARE COUNTY SANITARY ENGINEER
 250,000 G.P.D. AVERAGE DAILY FLOW
 1.5 PEAK FACTOR (375,000 G.P.D., 261 G.P.M.)
 MAXIMUM 30 mg/l TOTAL SUSPENDED SOLIDS INFLUENT (FROM EXISTING EXTENDED AERATION PLANT)
 MAXIMUM 5 mg/l TOTAL SUSPENDED SOLIDS EFFLUENT

FILTER SIZING
 FOUR FILTER CELLS, EACH 48.9 SQ.FT., 195.6 SQ.FT. TOTAL
 1.34 G.P.M./SQ.FT. (FOUR CELLS ON LINE AT PEAK FLOW)
 2.68 G.P.M./SQ.FT. (TWO CELLS ON LINE AT PEAK FLOW)

CLEARWELL SIZING
 8 G.P.M./SQ.FT. BACKWASH RATE
 48.9 X 8 = 392 G.P.M. PUMPING RATE
 392 G.P.M. X 10 MINUTE MINIMUM PUMP TIME X
 2 BACKWASH VOLUMES = 7,840 GALLONS
 (APPROX. 8,900 GALLONS CLEARWELL CAPACITY AVAILABLE)

DEMOLITION NOTES:
 THE EXISTING CONCRETE TERTIARY FILTER SHALL BE BYPASSED, DEWATERED, AND HAVE ALL EXISTING EQUIPMENT REMOVED AND DISPOSED OF. (AT THE DIRECTION OF DELAWARE COUNTY)
 ALL EXISTING PIPE OPENINGS (OTHER THAN THE EFFLUENT SHOWN ON PLANS) SHALL BE PLUGGED AND ABANDONED.
 ANY EXISTING ELECTRICAL FEEDS SHALL BE ABANDONED.
 THE BREAKERS AND WIRING SHALL BE REMOVED AND CONDUITS SHALL BE SEALED OFF.

ELECTRICAL NOTES:
 MACK INDUSTRIES SHALL PROVIDED ALL CONDUIT, WIRING, AND ACCESSORIES FOR A COMPLETE OPERABLE SYSTEM.
 CONDUIT SHALL BE IMC, 3/4" MINIMUM SIZE
 WIRING TO BE 600 VOLT, COPPER STRANDED, THHN/THWN
 480 VOLT/3 PHASE POWER SHALL BE FED FROM THE EXISTING MAIN DISTRIBUTION PANEL

ELEVATIONS:
 BENCHMARK: FINISHED BUILDING FLOOR ELEV. - 100.00'
 TOP OF EXISTING FILTER - 103.17'
 TOP OF MUDWELL ELEV. - 100.00'
 BOTTOM OF MUDWELL ELEV. - 89.33'

FILTER MODIFICATION DETAILS		
TARTAN FIELDS		
DRAWN BY:	ADM	REVISIONS:
CHECKED BY:		
DATE:	10/19/01	
SCALE:	3/8"=1'	
DRAWING NO.	PCV445	SHT. 1 OF 1

THIS DRAWING IS THE PROPERTY OF MACK INDUSTRIES, INC., AND IT OR THE TECHNOLOGY CONTAINED HEREIN MAY NOT BE REPRODUCED NOR USED EXCEPT AS ORIGINALLY INTENDED WITHOUT THE EXPRESSED CONSENT OF MACK INDUSTRIES, INC.

MACK INDUSTRIES, INC.

201 COLUMBIA RD.
 VALLEY CITY, OHIO 44280
 (330) 483-3111