

DAY BROTHERS DEVELOPMENT COMPANY

HOOVER WOODS SUBDIVISION

25,000 GALLON WASTEWATER TREATMENT PLANT

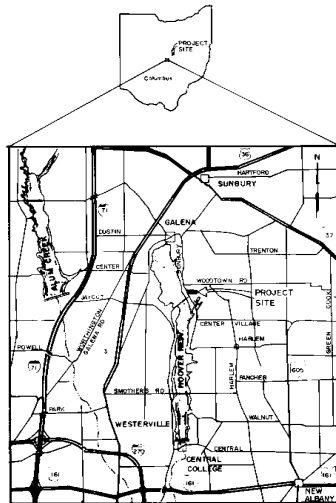
GENOA TOWNSHIP
DELAWARE COUNTY, OHIO

INDEX OF SHEETS

TITLE SHEET	-----	1
SITE PLAN	-----	2
HYDRAULIC PROFILE	-----	3
PRETREATMENT	-----	4
SLUDGE HOLDING TANK	-----	5
AERATION TANKS	-----	6
CLARIFIERS	-----	7
DOSING TANK	-----	8
SURFACE SAND FILTERS	-----	9
OPERATION/BLOWER BUILDING	-----	10
ELECTRICAL	-----	11

NOTE:

ALL WORK PERFORMED FOR THIS CONTRACT SHALL MEET THE CURRENT REQUIREMENTS OF THE "STANDARD PLANS AND SPECIFICATIONS FOR CONSTRUCTION OF SANITARY FACILITIES IN DELAWARE COUNTY, OHIO" AND "THE DELAWARE COUNTY ENGINEERING AND SURVEYING STANDARDS FOR SUBDIVISION DEVELOPMENT", UNLESS OTHERWISE DIRECTED BY THESE CONTRACT DOCUMENTS.



VICINITY MAP

DELAWARE CO. SANITARY ENGINEER:

Jack Smelker 9/10/89
JACK SMELKER PE NO DATE

DELAWARE CO. COMMISSIONERS

Fay L. Harrott 4-10-88
FAY L. HARROTT - PRESIDENT DATE

Merlin S. Sheets
MERLIN SHEETS DATE

Roy Jackson 4/10/89
ROY JACKSON DATE

OHIO ENVIRONMENTAL PROTECTION AGENCY (O.E.P.A.)

BY LETTER OF _____ FROM _____

PLANS PREPARED

BY

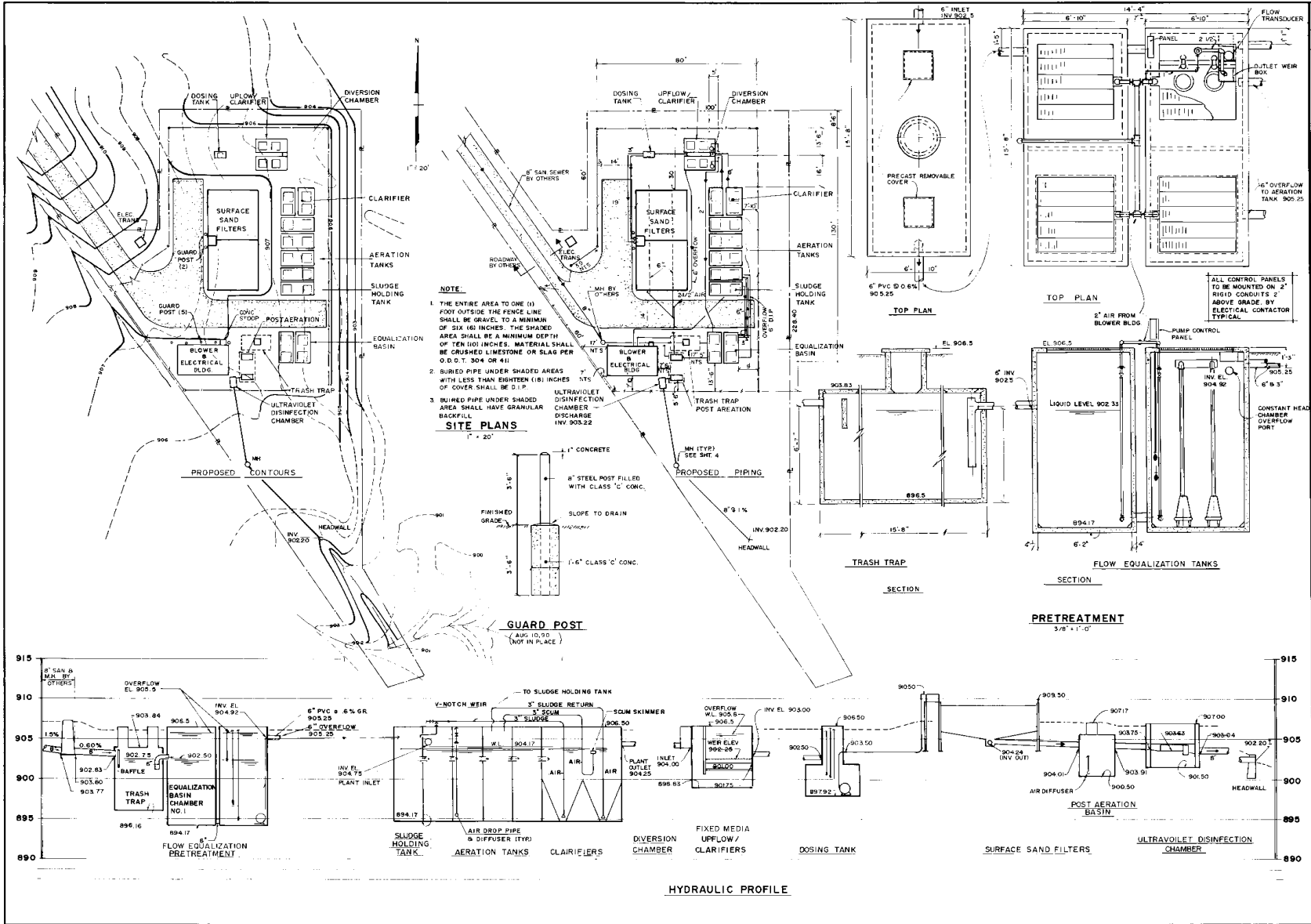
JOHN DAVID JONES AND ASSOCIATES, INC.

CONSULTING ENGINEERS ARCHITECTS PLANNERS
 CUYAHOGA FALLS, COLUMBUS, CLEVELAND, HAMILTON, OHIO

5900 ROCHE DR.
 COLUMBUS, OHIO 43229
 (614) 438-9633

JAMES S. JONES NO 37940

3/30/89
DATE

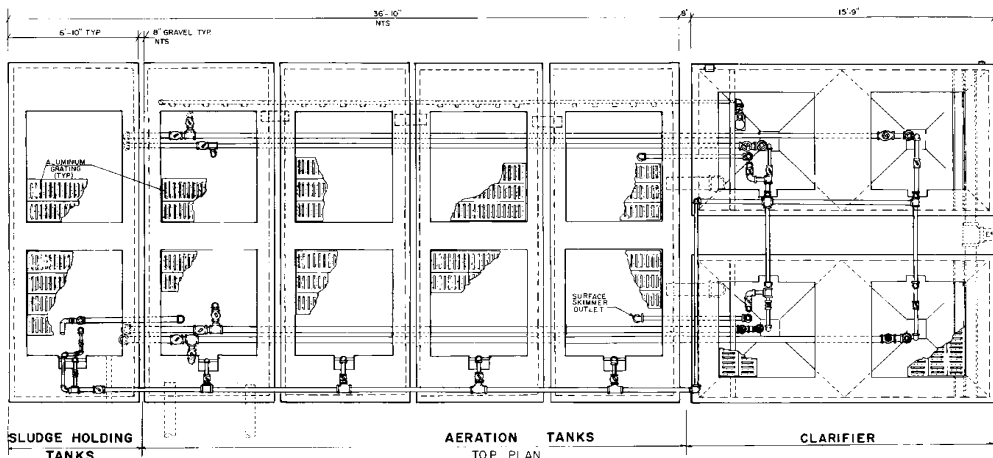


BY	DATE	SCALE	PROJ. NO.
DESIGNED			88069
DRAWN			SHEET NO. 2
TRACED			NO.
CHECKED			6

REVISIONS	BY	DATE

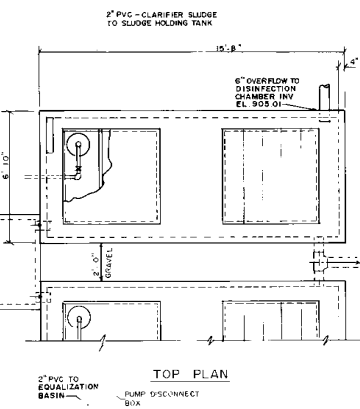
PLANNERS	JOHN DAVID JONES AND ASSOCIATES INC.
ARCHITECTS	COLUMBUS, OHIO
ENGINEERS	COLUMBUS, OHIO
CONSULTING ENGINEERS	COLUMBUS, OHIO

GEN. & PLAN. SUPERVISOR	HOOPER WOODS SUPERVISION
PLANT SUPERVISOR	HOOPER WOODS SUPERVISION
DESIGNER	HOOPER WOODS SUPERVISION
CHECKER	HOOPER WOODS SUPERVISION
DRAWN	HOOPER WOODS SUPERVISION
TRACED	HOOPER WOODS SUPERVISION
DESIGNED	HOOPER WOODS SUPERVISION

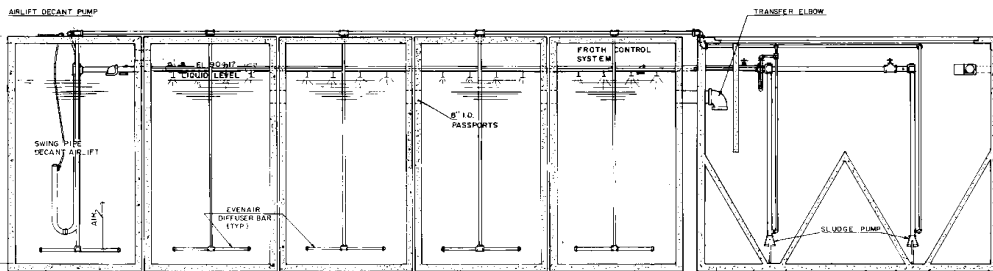


SLUDGE HOLDING TANKS AERATION TANKS CLARIFIER

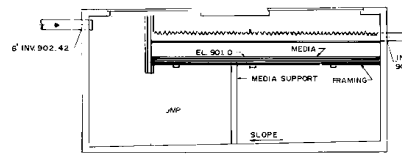
NOTE:
1. FOR FINAL DIMENSIONS, SEE APPROVED MPE SHOP DRAWINGS



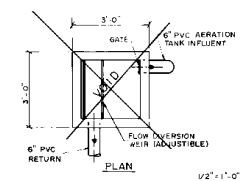
UPFLOW / CLARIFIER
3/8" x 1'-0"



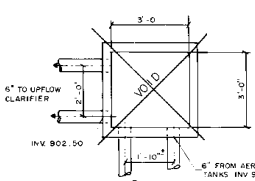
SECTION



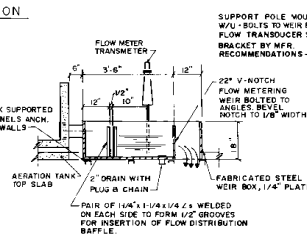
SECTION
UPFLOW / CLARIFIER
3/8" x 1'-0"



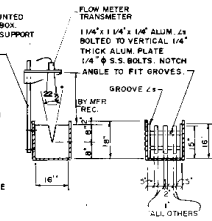
DIVERSION BOX
W/V-NOTCH WEIR
1/2" x 1'-0"



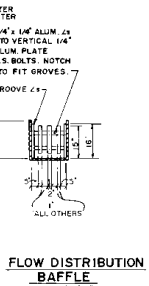
DIVERSION CHAMBER
1/2" x 1'-0"



WEIR BOX
1/2" x 1'-0"

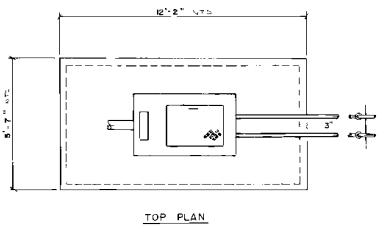


V-NOTCH WEIR
1/2" x 1'-0"

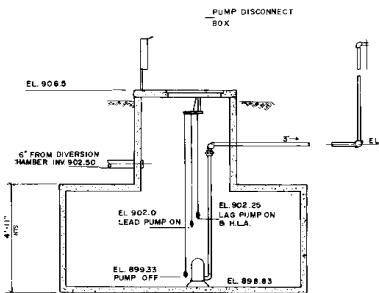


FLOW DISTRIBUTION
BAFFLE
1/2" x 1'-0"

REVISED		DATE	BY	SCALE	PROJ. NO.
					88069
DESIGNED	DRAWN	TRACED	CHECKED	SHEET NO.	OF
				3	6
JOHN DAVID JONES AND ASSOCIATES INC. PLANNERS CONSULTING ENGINEERS ARCHITECTS 1415 S. COLUMBUS ST. CLEVELAND, OHIO CUYAHOGA COUNTY, OHIO				HOOPER WOODS DIVISION WASTEWATER TREATMENT PLANT DELAWARE COUNTY, OHIO	
SLUDGE HOLDING TANK AERATION TANKS CLARIFIERS				GENOA TOWNSHIP DELAWARE COUNTY, OHIO	

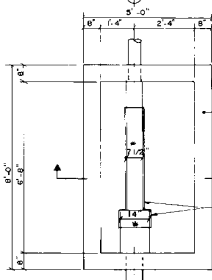


TOP PLAN



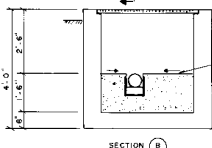
SECTION

NORWECO CO. MODEL N8-A
2250 GAL. DOSING TANK

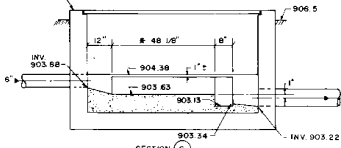


ULTRAVIOLET DISINFECTION CHAMBER

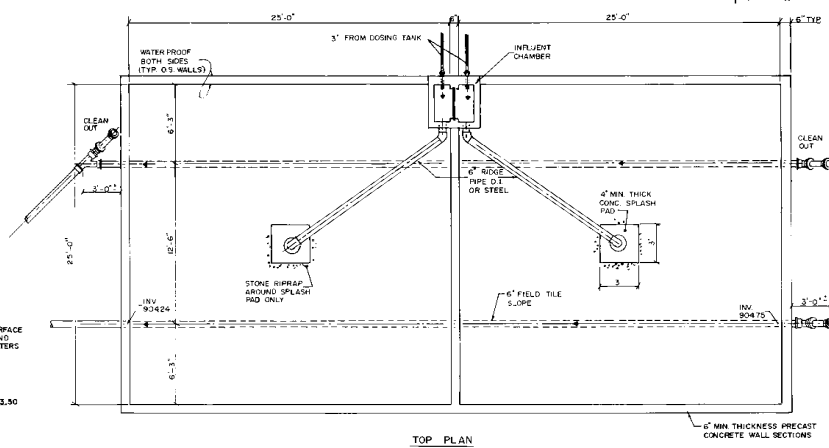
FOR FINAL DIMENSION
SEE APPROVED MFG.
SHOP DRAWINGS



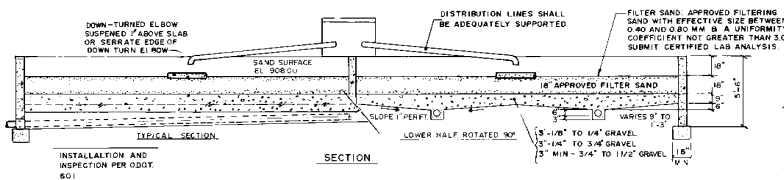
SECTION (B)



SECTION (C)



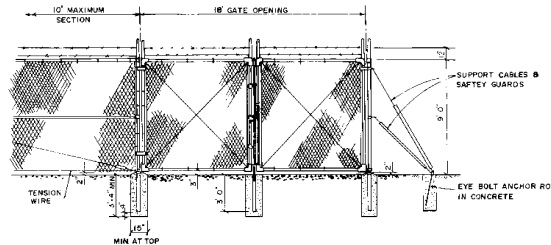
TOP PLAN



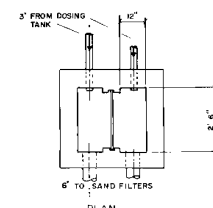
SECTION

SURFACE SAND FILTERS

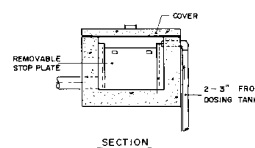
INSTALLATION AND
INSPECTION PER ODDT
601



DETAIL - CHAIN LINK FENCE
(AT GATE)

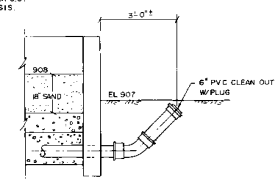


PLAN

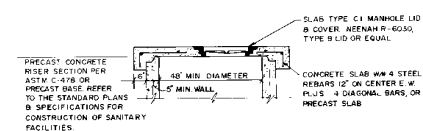


SECTION

INFLUENT CHAMBER



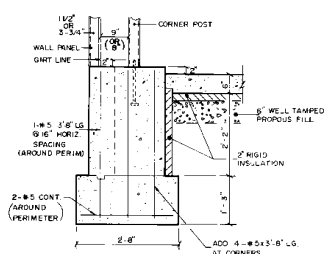
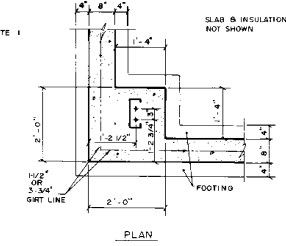
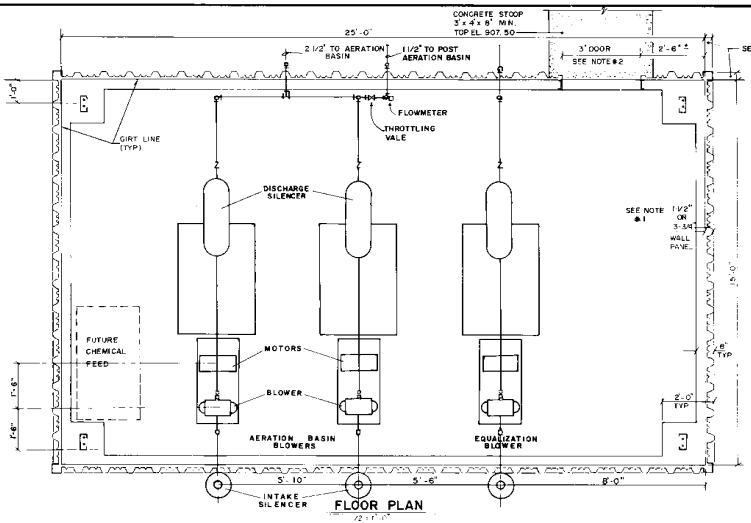
CLEAN OUT NORTH SIDE SHOWN - SOUTH SIMILAR



DETAIL - SHALLOW MANHOLE

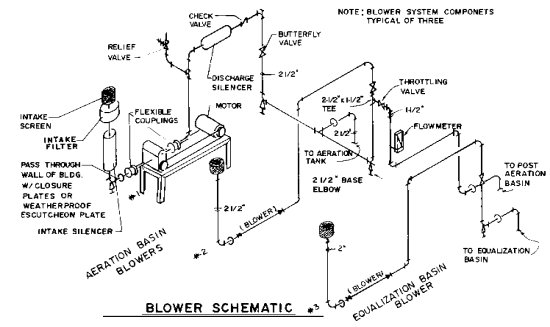
BY	DATE	SCALE	PROJECT NO.
DESIGNED			
DRAWN			
TRACED			
CHECKED			
PROJ. NO.	88069		
SHEET NO.	4		
OF	6		

JOHN DAVID JONES AND ASSOCIATES INC. PLANNERS
 CONSULTING ENGINEERS
 1115 COLUMBUS ST. CLEVELAND 6, OHIO
 HOOPER WOODS DIVISION
 2500 W. 120th ST.
 GENOA TOWNSHIP
 BELLEVUE COUNTY, OHIO
 DOSING TANK
 SURFACE SAND FILTERS
 WASTEWATER TREATMENT PLANT

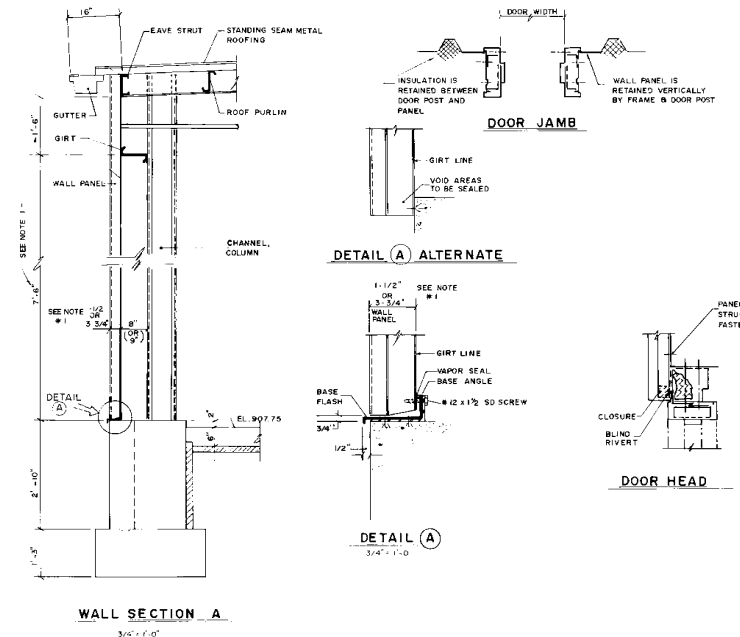


TYPICAL CORNER DETAIL
3/4" x 1-0"

- NOTES:**
- FOR FINAL DIMENSIONS, SEE APPROVED MFG. SHOP DRAWINGS
 - DOOR IS SHOWN AT 3' IN ANTICIPATION OF A 29" WIDE BLOWER FRAME DOOR SHALL BE SIZED TO PERMIT ENTRY OF BLOWER MOUNTED ON FRAME INCLUDING OVERHANG. BUILDING MFG. SHALL CONSULT WITH AERATION EQUIPMENT SUPPLIER FOR FINAL DIMENSIONS OF BLOWER AND ANY OTHER EQUIPMENT WHICH MUST PASS THRU THE DOOR.



NOTE: BLOWER SYSTEM COMPONENTS TYPICAL OF THREE



DATE	SCALE	BY	PROJ. NO.
11/16/22	AS SHOWN	JDJ	88069
DATE	SCALE	BY	PROJ. NO.
DESIGNED	VERT.	CHECKED	DATE
BY		NO.	
TRACED			
CHECKED			
JOHN DAVID JONES AND ASSOCIATES INC. CONSULTING ENGINEERS 1111 S. COLUMBUS AVE. CLEVELAND, OHIO 44106 HOOPER WOODS SUBDIVISION DELAWARE COUNTY, OHIO WASTEWATER TREATMENT PLANT			
OPERATION/ BLOWER BUILDING			
REVISIONS NO. 1 DATE 11/16/22 BY JDJ			

